



LEMUR – Lite Managed Switches

Cost-effective with advanced data rates

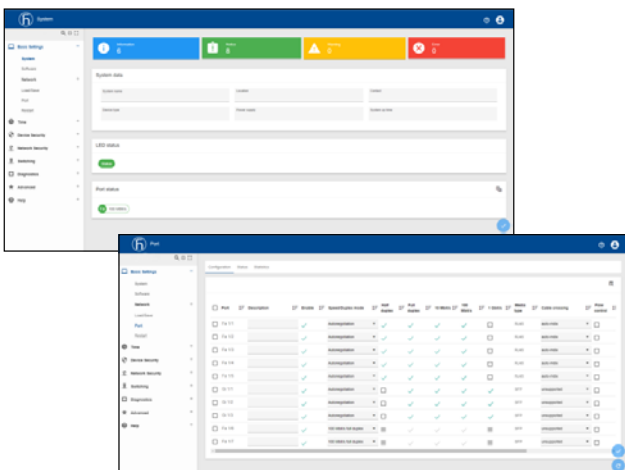
PRODUCT BULLETIN 



The new LEMUR lite managed switch family offers the most advanced data rates for the price point, up to 11 ports, PoE/PoE+ options, IP30 protection and an extended temperature range of -40°C to +60°C.

- **Cost-optimized design** provides the best functionality for the price point, including full gigabit Ethernet and compact housing.
- **Essential features, plus high reliability** delivers “set it and forget it” capability.
- **Easy configuration and management** using the intuitive HiEOS Hirschmann Entry Operating System graphical user interface.

HiEOS
Hirschmann™ Entry Operating System



Cost-optimized, easy to use, secure

- Easy to use thanks to simple implementation and low maintenance requirements.
- Intuitive web interface allows users to configure and monitor without any special IT know-how.
- Enhanced security – developed in accordance with secure development lifecycle process IEC 62443-4-1.
- Power over Ethernet (PoE) and PoE+ options, offering up to 180 W power with no need for a separate power supply.
- High data rates with up to full Gigabit speeds and 7 copper ports, 3 SFP ports, and 1 SFP/copper combo port.



Ruggedized to suit many industrial applications, the LEMUR lite managed switch family offers exceptional value with high port counts, PoE/PoE+, full Gigabit Ethernet and advanced security.

Your Benefits

As automation expands, powerful, ruggedized and cost-effective switches are a necessity. The LEMUR lite managed switch family provides sought-after features - full Gigabit Ethernet and PoE/PoE+ options - for a reasonable price point. With up to 11 Gigabit Ethernet ports, LEMUR lite managed switches provide ample power and connectivity for complex industrial environments. An intuitive graphical user interface makes setup and maintenance easy - with no special IT intervention or knowledge required.

Applications

LEMUR lite managed switches are ideal for industrial applications that require compact, secure and ruggedized equipment. Developed in accordance with IEC 62443-4-1, LEMUR switches meet cybersecurity standards for industrial automation and control systems environments. Built on all-new, sophisticated HiEOS software, LEMUR switches support multiple communications protocols.

Markets

The LEMUR switch family suits many industrial applications, including manufacturing, machine building, food and beverage, automotive, and consumer packaged goods, along with traffic control systems, train stations and airports.



Technical Information

Product Description

Type	LRS30-7TX/3SFP-1C	LRS32-7TX/3SFP-1C	LRS40-7TX-3SFP/1C	LRS42-7TX/3SFP-1C
Description	Lite Managed Industrial ETHERNET Rail-Switch, Ethernet/Fast-Ethernet/Full-Gigabit-Ethernet Switch with Gigabit Uplink, Store and Forward Switching Mode, PoE+ variants, fanless design			
Port Type and Quantity	7 x 10/100BASE-TX 3 x 100/1000BASE-FX SFP 1 x Combo (10/100/1000BASE-TX and 100/1000BASE-FX SFP)	7 x 10/100BASE-TX 3 x 100/1000BASE-FX SFP 1 x Combo (10/100/1000BASE-TX and 100/1000BASE-FX SFP) PoE+ on 8 TX ports, PoE power budget max. 180 W	7 x 10/100/1000BASE-TX 3 x 100/1000BASE-FX SFP 1 x Combo (10/100/1000BASE-TX and 100/1000BASE-FX SFP)	7 x 10/100/1000BASE-TX 3 x 100/1000BASE-FX SFP 1 x Combo (10/100/1000BASE-TX and 100/1000BASE-FX SFP) PoE+ on 8 TX ports, PoE power budget max. 180 W
Order No.	942-328-005	942-328-006	942-328-003	942-328-004

Communication Interfaces

LEDs	Power, port state, PoE
-------------	------------------------

Network Size - Length of Cable

Twisted Pair (TP)	0-100 m
--------------------------	---------

Power Requirements

Power Supply Connector	1 x plug-in terminal block, 6-pin	1 x plug-in terminal block, 6-pin	1 x plug-in terminal block, 6-pin	1 x plug-in terminal block, 6-pin
Operating Voltage	24 VDC	48 VDC (PoE) / 54 VDC (PoE+)	24 VDC	48 VDC (PoE) / 54 VDC (PoE+)
Voltage range incl. max. tolerances	9.6 - 32 VDC	46 - 57 VDC	9.6 - 32 VDC	46 - 57 VDC

Software

Management	LLDP (802.1AB), LLDP-MED, Password change on first login, SSHv2, HTTP, HTTPS, Responsive GUI, SNMP v1/v2/v3, Traps, Telnet, TFTP, Dual Software Image Support
Diagnose	Management Address Conflict Detection, LEDs, Device Status Indication, Syslog, Link Speed and Duplex Monitoring, RMON (1, 2, 3, 9), Port Mirroring 1:1, Port Mirroring N:1, System Information, SFP Management
Configuration	Web-based Management, HiDiscovery, Command Line Interface (CLI), Full-featured MIB Support
Security	MAC Address Limit Per Port, Restricted Management Access, Appropriate Use Banner, Multiple Privilege Levels, Local User Management
Redundancy Functions	MRP Client, RSTP 802.1D-2004 (IEC62439-1), ERPS* (G.8032), ERPS* v2 (G.8032)
Switching	Static Unicast/Multicast Address Entries, VLAN (802.1Q), Independent VLAN Learning, QoS/Port Prioritization (802.1D/p), TOS/DSCP Prioritization, CoS Queue Management, Queue-Shaping/Max. Queue Bandwidth, Jumbo Frames, IGMP Snooping/Querier (v1/v2/v3), Unknown Multicast Filtering, IGMP Group Filtering per Port, Flow Control (802.3X), Egress Interface Shaping, Ingress Storm Protection
Miscellaneous	PoE (802.3AF), PoE+ (802.3AT)
Time Synchronization	NTP Client

Ambient Conditions

Operating Temperature	-40°C to +60°C
Storage/Transport Temperature	-40°C to + 85°C
Relative Humidity (non-condensing)	5% to 95%

Mechanical Construction

Mounting	DIN Rail			
Protection Class	IP30			
Dimensions (W x H x D) mm	68 mm x 135 mm x 118 mm			
Weight	680 g	720 g	680 g	720 g

Approvals

Basis Standard	cUL 61010-1
Safety of Industrial Control Equipment	UL61010-1/-2-201**
Reliability	
Warranty	5 Years Standard
Scope of Delivery and Accessories	
Scope of Delivery	Device, Terminal Block, Start-up Instructions, Safety Instructions
Accessories to Order Separately	SFP Transceivers, Rail Power Supply, Mounting Accessories

*Coming soon

**Approval pending

NOTE: These are the prominent technical specifications. For complete technical specifications visit: www.belden.com

